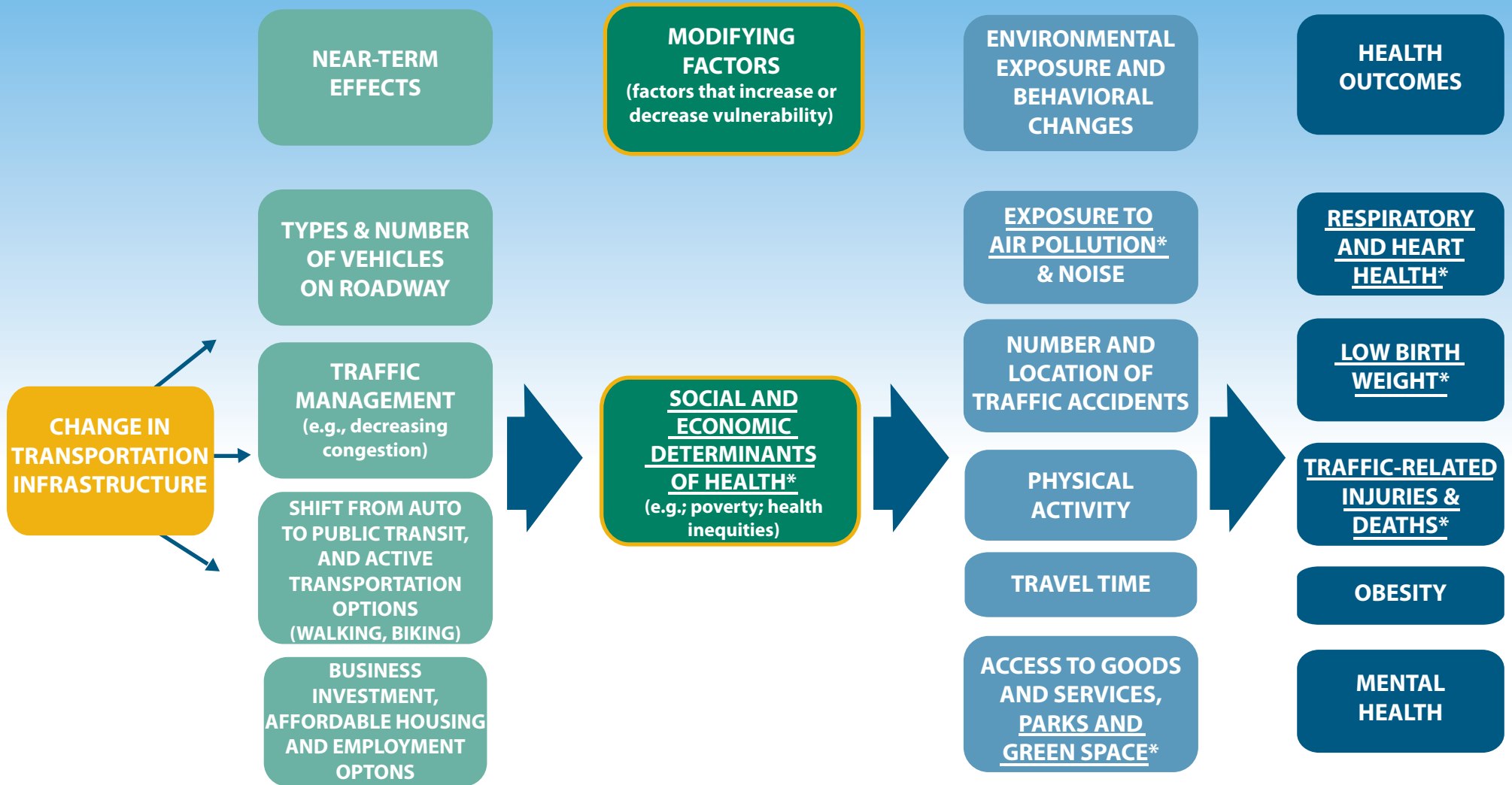


Tracking Network Data for Health Impact Assessment: Transportation

(Selected Impacts)



*Data available on Tracking Network. Click the text for more information

www.cdc.gov/ephtracking

Some populations are more susceptible to adverse health effects resulting from changes in transportation. Examples of vulnerable populations include older adults, young children, people with chronic health conditions such as asthma or obesity, and people living in high poverty neighborhoods, among others.

